

# Capability Convos

Australian Curriculum V9.0 links for  
Years 3 to 7

**English**

- Language
- Literacy

**General Capabilities:**

- Critical and Creative Thinking
- Personal and Social Capability
- Ethical Understanding
- Literacy

## Learning outcomes:

All students will be able to:

- identify some likes, dislikes, strengths, abilities and/or interests when showing a personal preference
- acknowledge that people have different needs, emotions and abilities

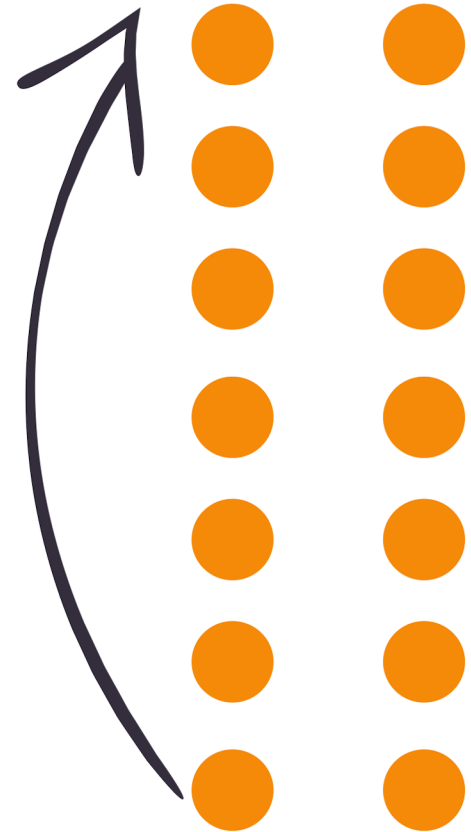
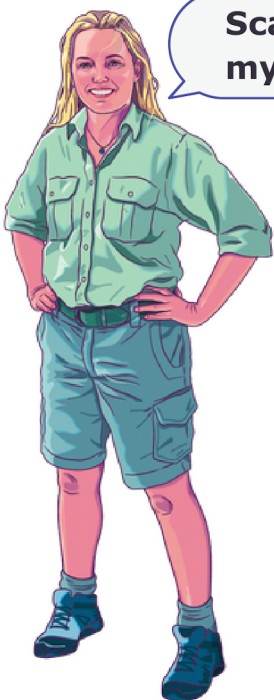
In addition, some students will be able to:

- describe the ways they are connected and can contribute to their community groups

## Format

- Interactive game with 10 questions
- Easy to play
- Watch Phoebe's film with the class
- Print the questions
- Play the game
- Modify or include new questions based on students' needs

Scan this QR code to watch  
my film.



## Instructions for students

Line the class up in two lines facing each other to form pairs. Ask the first question. Once each pair has discussed it, get one line to move one person to their right. The person at the end runs around to the other end of the line. Then you ask the next question and repeat the process until all the questions have been asked.

# Phoebe

## Wildlife Conservation Officer

### Question 1

What do you think is interesting about Phoebe's career?

### Question 2

What skills does Phoebe have that you also have, and does she have any skills you don't have that you would like to have?

### Question 3

How might technology change this career in the future?

### Question 4

Why do you think it's important to find a career that suits your skills and personality?

### Question 5

How are your current interests and hobbies similar to Phoebe's career?

### Question 6

How do you think Phoebe's career contributes to society?

### Question 7

How could this career be done in a rural or remote setting?

### Question 8

What kind of tools or technologies do you think Phoebe uses in her work?

### Question 9

When would teamwork be important in Phoebe's line of work? Can you think of an example of when you use teamwork?

### Question 10

What other types of wildlife in their natural habitat do you think are protected or managed?